

Tanks (25 kl Total Storage) to supply the twin booster under fire conditions. (Level controlled by float control valves)

IV4 & IV5 to remain open at all times including during fire conditions. (Except for maintenance on tanks and associated tank pipework)

IV8 and IV10 to remain open at all times Specifically during fire conditions.

IV6 to remain open. (To be closed only when main supply to Phase 1 needs to be shut off)

IV7 to remain open. (To be closed only when main supply to Phase 2 and Phase 3 needs to be shut off)

Domestic Booster (IN LINE PUMP)

IV3 to be closed at all times except when tank supply and associated pipework require maintenance.

DETAIL 1

not to scale

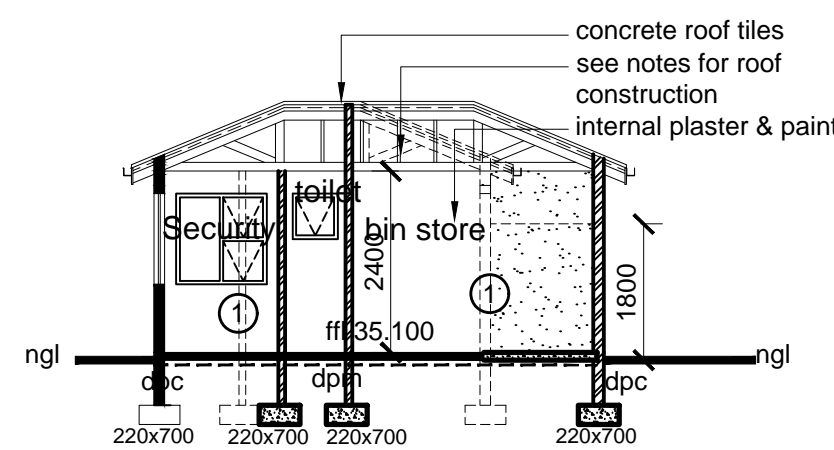
Rem of Erf 143

NB:
Units 8, 9, & 10 to have a 1 x 30m FHR each.
See drawing No. 08/15 for position

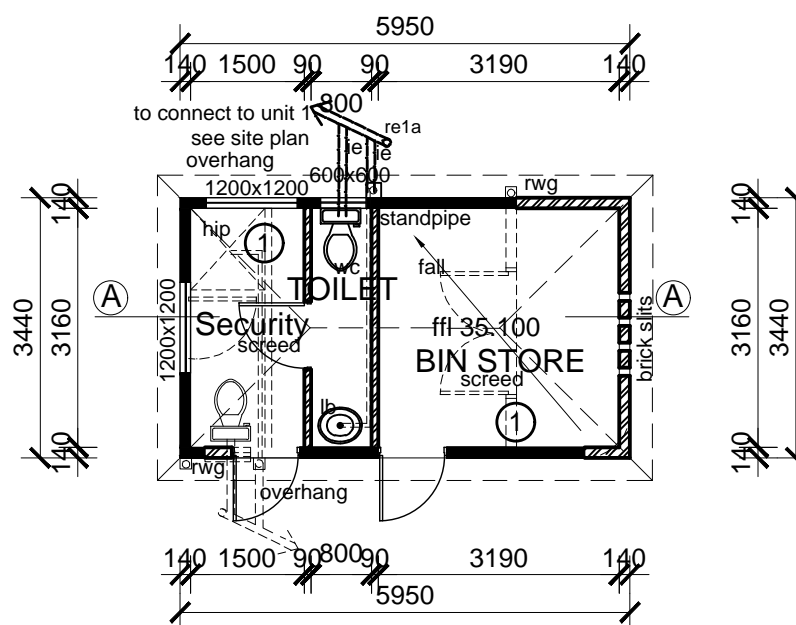
For tanks and associated pipework details : Refer to Drg No. 1339-W6.

Crown Valve to remain closed - to be opened only when IV1, IV8 and IV9 are closed for maintenance purposes.

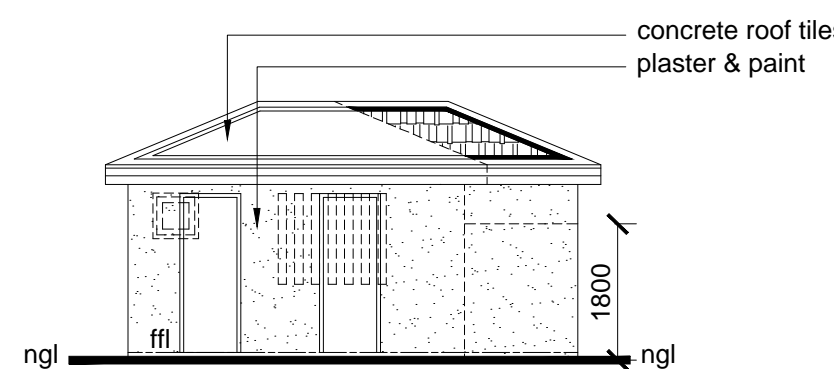
AREA	
Binstore	15.300 m ²
Prop Add	5.160 m ²
TOTAL AREA	20.46 m ²
Cov increased by 5.160 m ² FAR increased by 5.160 m ²	



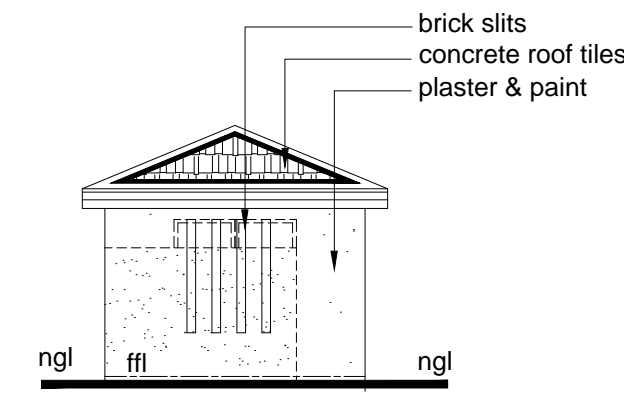
SECTION A-A
Bin Store



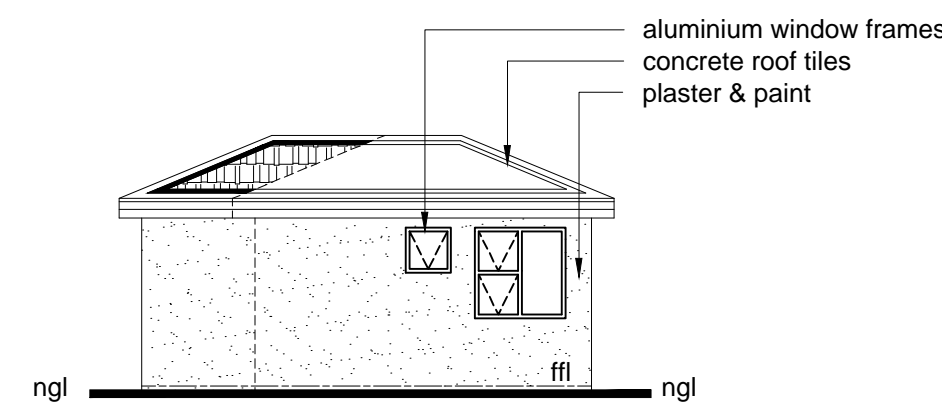
FLOOR PLAN
Bin Store



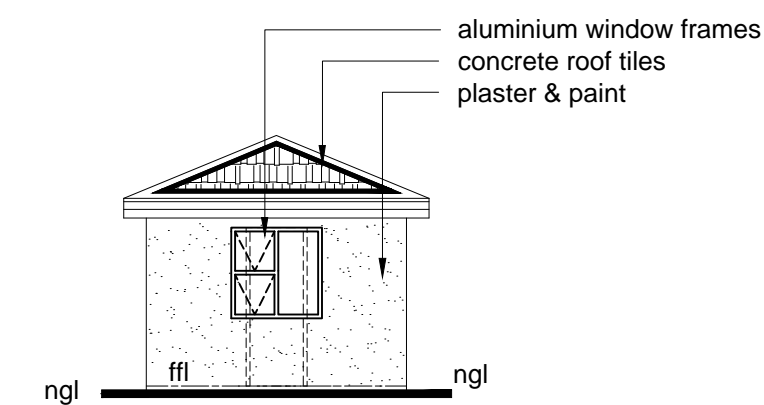
SOUTH EAST ELEVATION
Bin Store



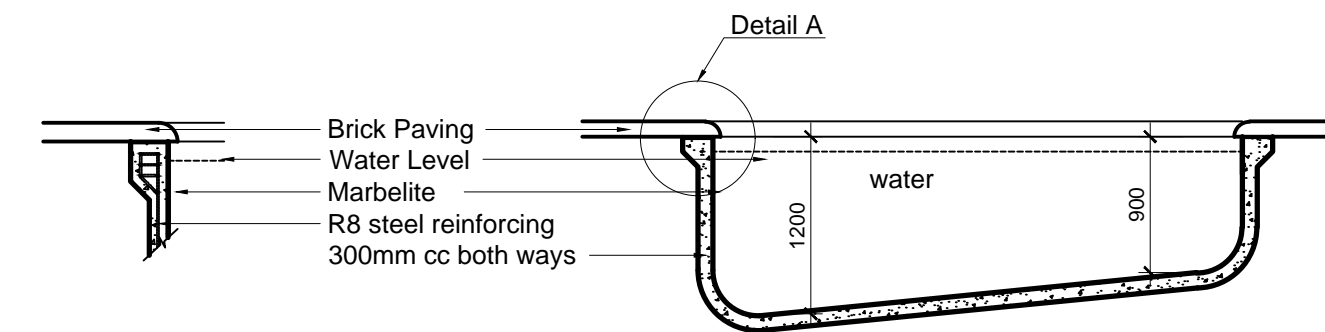
NORTH EAST ELEVATION
Bin Store



NORTH WEST ELEVATION
Bin Store



SOUTH WEST ELEVATION
Bin Store



DETAIL A
1:20

POOL SECTION
1:50

NB:
Twin booster connection to comply with part TT 35 and WW5

Notes:
Public Safety:-Balustrade to comply with part D & M of NBR.
-Pool fence to comply with DD 4 of NBR.
-Septic tank to be built to Geo-tech specification.
-Septic tank to be 3.0m from all buildings and boundaries.

FIRE NOTES
Fire protection to comply with the following NBR regulations:
-6Hose reels
-7Extinguishers
-9(kg dry powder 2no. to be situated at fire officers discretion)
-8Water supply

REFER :
DETAIL 1

TT34
TT/33WW4

BULK Metered Connection

Areas	
Existing F.A.R.	4038.430 m ²
Proposed F.A.R.	105.637 m ²
Total F.A.R.	4144.067 m ²
Existing Coverage	3596.729 m ²
Proposed Coverage	132.261 m ²
Total Coverage	3728.99 m ²
Total Area of New Development 181.931 m ²	
Site Area	22 281.00 m ²

unit 5	-	cov increased by 42.474m ²
binstore	-	cov increased by 5.160 m ²
office	-	cov increased by 50.807 m ²
units 8,9,10	-	cov increased by 33.82 m ²
Total	-	132.261 m ²

binstore	-	far increased by 5.160 m ²
Unit 6&7	-	far increased by 5.540m ²
office	-	far increased by 50.807 m ²
units 8,9,10	-	far increased by 44.13 m ²
Total	-	105.637 m ²

Area increased	-	
unit 5	-	by 42.474m ²
binstore	-	by 5.160 m ²
office	-	by 50.807 m ²
Unit 6&7	-	by 5.540m ²
units 8,9,10	-	by 77.95 m ²
Total	-	181.931m ²

Site Plan
SCALE 1:500

Title: Working Drawings: Site Plan
Client: Bonitas Medical Fund
Client Signature:

Project: Deviations form previously approved plan: 906/06/A
Site: Portion 7 of Erf 147, Clansthal, Blamey Close

Scale: As Shown Date: May 2009

Architectural
Concepts

SACAP
Registration Number: S0594
1 Hawthorne Road
Wamer Beach
4126
P.O.Box 70,
Wamer Beach,4140
Tel: 031 916 7116/7
email: archicon@telkomsa.net
Drg: 1/15 Job: 11440-AsBt